

TRANSFORMERS

DARK OF THE MOON™



WARNING:
CHOKING HAZARD—Small parts.
Not for children under 3 years.

AGES 5+
29683/28707 ASST.

AUTOBOT

EASY

POWERGLIDE™ LEVEL: 1 2 3

NOTE: Some parts are made to detach if excessive force is applied, and are designed to be reattached if separation occurs. Adult supervision may be necessary for younger children.

CHANGING TO VEHICLE

1. Detach the cockpit and engine components from the robot's chest.

2. Attach the cockpit and engine components to the robot's shoulders.

3. Attach the red wing covers to the robot's arms.

4. Rotate the red wing covers to their final position.

5. Attach the red wing covers to the robot's arms.

6. Attach the red wing covers to the robot's arms. Labels A and B indicate specific attachment points.

7. Rotate the red wing covers to their final position.

8. Attach the red wing covers to the robot's arms.

9. Rotate the red wing covers to their final position.

10. Attach the red wing covers to the robot's arms.

11. Rotate the red wing covers to their final position.

12. Attach the red wing covers to the robot's arms.

13. Attach the red wing covers to the robot's arms.

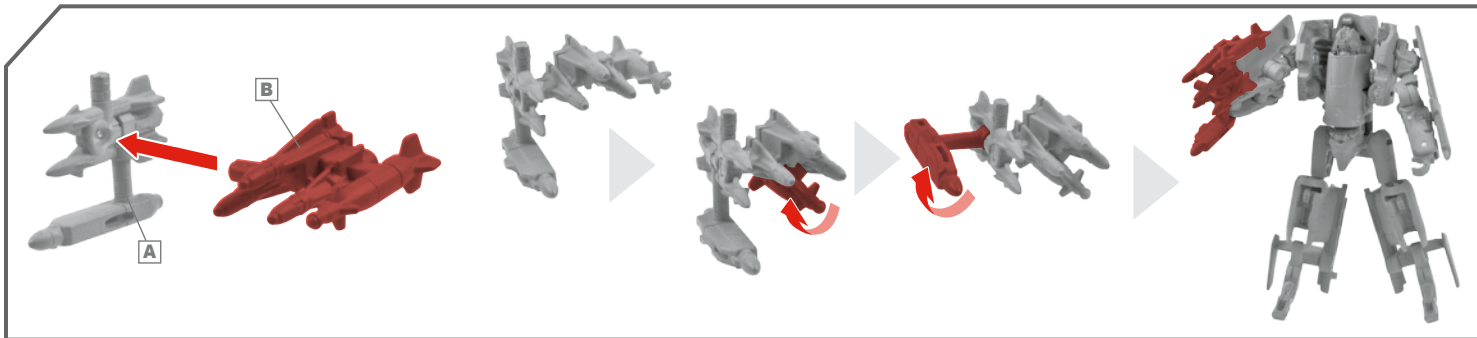
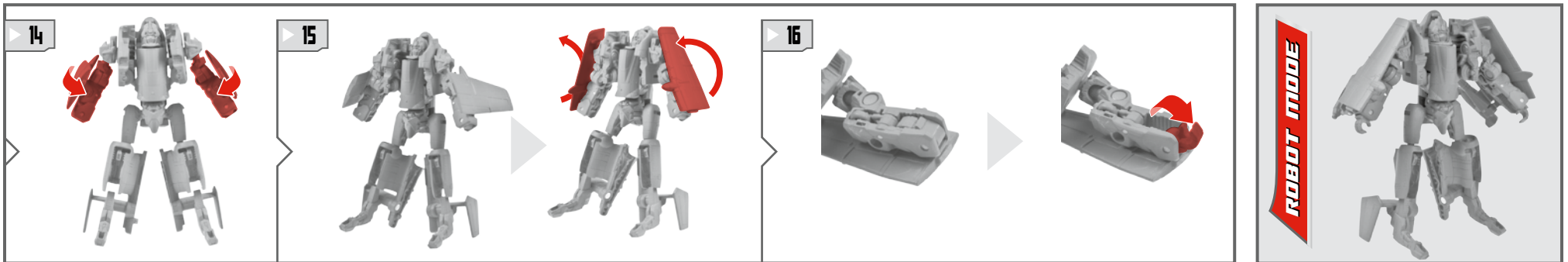
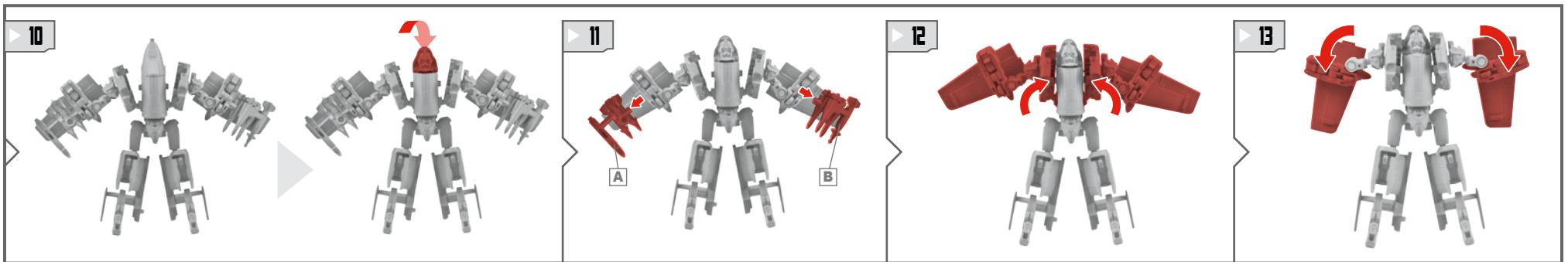
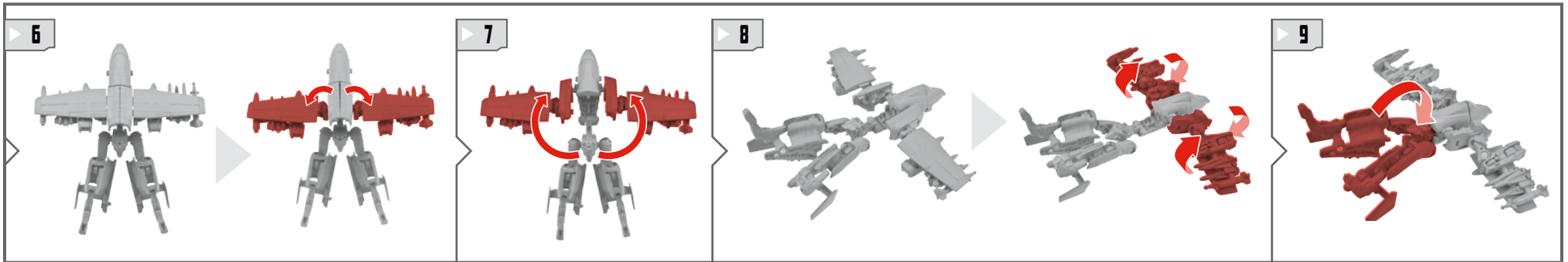
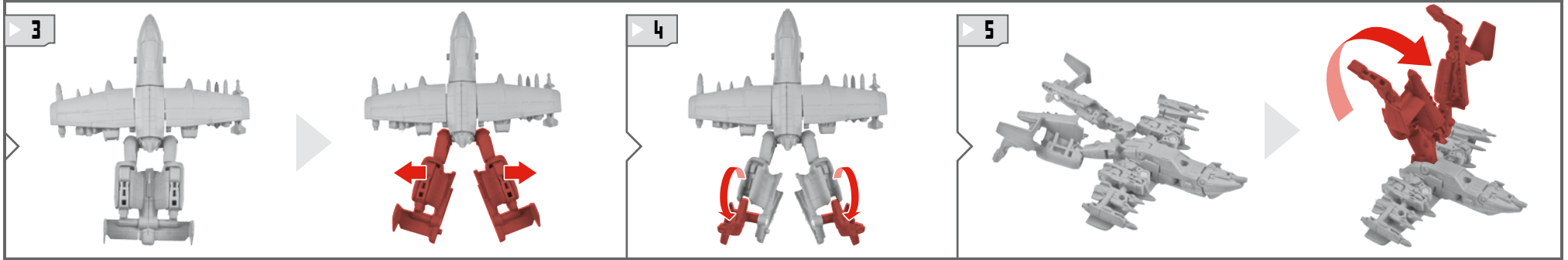
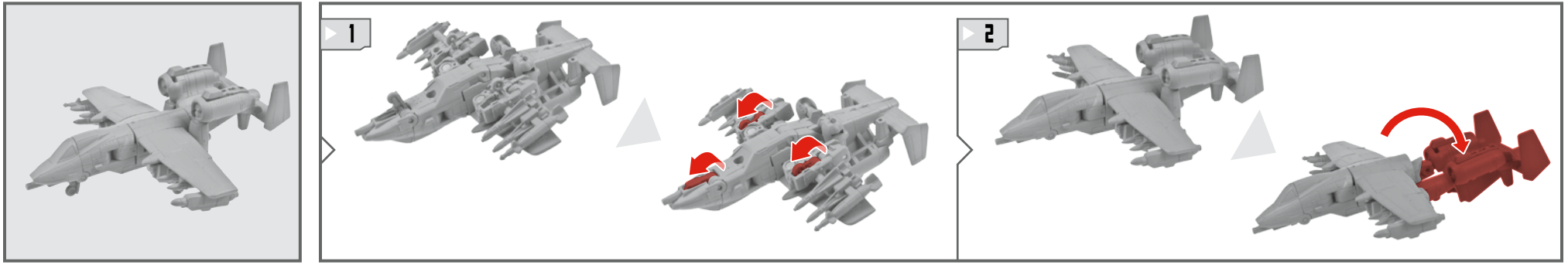
14. Attach the red wing covers to the robot's arms.

15. Attach the red wing covers to the robot's arms.

16. Attach the red wing covers to the robot's arms.

VEHICLE MODE

CHANGING TO ROBOT



Retain instructions for future reference.



Product and colors may vary. Some poses may require hand support.
 © 2010 Paramount Pictures Corporation.
 Manufactured under license from TOMY Company, Ltd.
 © 2010 Hasbro. All Rights Reserved. TM & © denote U.S. Trademarks.



P/N 714095000

TRANSFORMERS.COM/INSTRUCTIONS